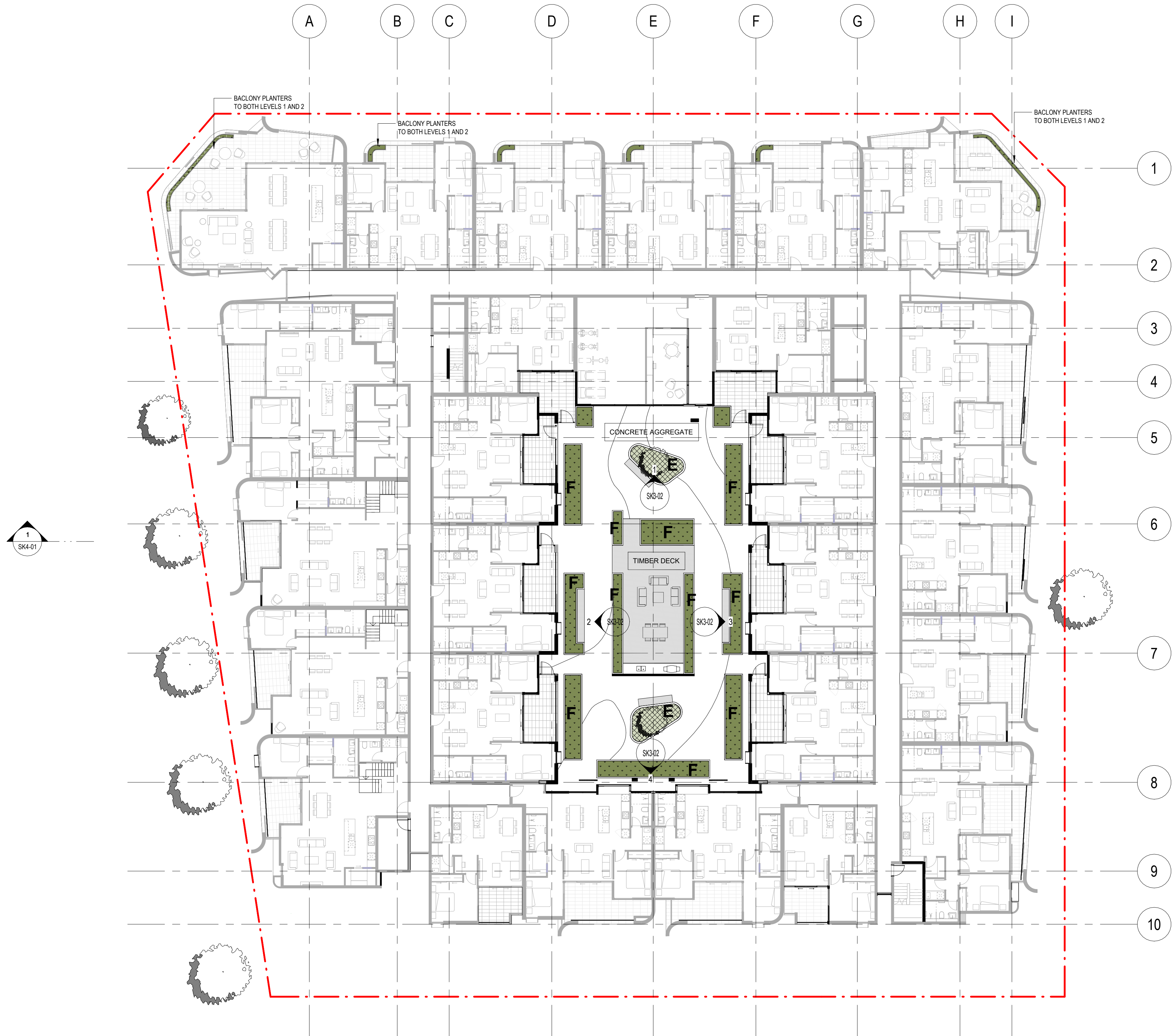


This site plan illustrates the proposed landscaping for a commercial building. The plan includes a grid system with letters A through I across the top and numbers 1 through 10 along the right side. Key features include:

- Building Footprint:** A large commercial building with a central courtyard area labeled 'FL 1.500' and 'Commercial'. Other levels shown are 'FL 1.929' and 'FL 0.214'.
- Landscaping Elements:**
 - Vertical Trellis Planting:** Indicated by dashed lines and labels along the top and right boundaries.
 - Low Planter:** Located along the top boundary of the building.
 - Raised Planter:** Located along the right boundary, with labels 'RL 1.929' and 'RAISED PLANTER'.
 - L'SCAPE:** Various landscaped areas, including a large 'RAISED LANDSCAPED AREA' at the bottom right.
 - Existing Trees Retained:** Several trees are marked with labels like 'EXISTING TREE RETAINED' and 'RL 1.230'.
- Topography and Elevation:** Elevation markers such as 'RL 1.230', 'RL 1.500', 'RL 1.929', and 'RL 0.214' are placed throughout the plan. A dashed line indicates a 1:10 slope.
- Access and Circulation:** A 'KING ROAD' is shown on the left side, with a 'LINK 2' area near the building entrance.

RESIDENTIAL ENTRY - TO HELP WITH LEGIBILITY AND DEFINE ENTRY, AN ICONIC SHADE TOLERANT SUCCULENT SUCH AS MOTHERS TONGUE..



LANDSCAPE LEGEND:

NOTE:

TO BE READ IN CONJUNCTION WITH DESIGN REPORT.
REFER TO SECTION OF DESIGN REPORT UNDER THE PRINCIPLE
OF LANDSCAPE QUALITY FOR MORE DETAILS.



PLANTING ZONE E:

ON STRUCTURE PLANTING UP TO 1M DEPTH, WITH A FEATURE TREE
SUCH AS A FRANGIPANI, WITH A BASE OF GRASS STRUCTURE WITH
SOME TRAILING AND EXOTIC SHRUBS.



PLANTING ZONE F:

ON STRUCTURE PLANTING UP TO 500MM DEPTH WITH GRASS
STRUCTURE, TRAILING AND EXOTIC SHRUBS.